



THE CENTRE FOR LONG-TERM RESILIENCE

Director of Strategic Partnerships Application Pack

Location: **Whitehall, London/Hybrid***

Reports to: **Chief Executive**

Contract: **Permanent**

Hours: **40 per week**

Salary: **Circa. £75k**

Bamboo
Fundraising Recruitment

0203 750 3111
bamboofundraising.co.uk

** ideally we are looking for someone who can travel to the office twice per week, but please do get in touch if location is a barrier to you applying, as we can consider remote working for the right candidate.*

About Us

extreme risk: a high impact threat that has the potential to devastate lives and economies around the world.



About the Centre for Long-Term Resilience

Extreme risks pose some of the biggest challenges of the 21st century. The COVID-19 pandemic demonstrated the devastating impact they can have, but we are likely to face greater risks in our lifetimes. Threats from the misuse of biotechnology or powerful AI systems would be even more destructive, yet we're less prepared for them.

The Centre for Long-Term Resilience is the only think tank in the world focused entirely on working with governments to boost resilience to extreme risks — with a particular focus on AI risk and biosecurity.

We work with governments and other institutions to improve governance, processes, and decision-making, so they're equipped to anticipate, mitigate, and respond to risks.



About Us

What We Do

Help decision-makers and the public understand extreme risks

Provide an exchange for specialist knowledge by facilitating expert placements into government

Provide expert advice and challenge policy decisions

Initiate cross-sector conversations and workshops related to extreme risks

Develop and advocate for policy recommendations and effective risk management frameworks

“ Many of the dangers we face indeed arise from science and technology—but, more fundamentally, because we have become powerful without becoming commensurately wise. ”

- Carl Sagan

About Us

Theory of Change



Research and influence of AI risk, biosecurity, and risk management experts, combined with an understanding of how to get things done in government.



Concrete, actionable **policy advice**, designed in collaboration with governments and other actors, along with **mainstreaming** of extreme risks as an issue area within policy circles, and **improved expert capacity** to work with governments on these issues.



High-impact actions taken by decision-makers in government (and other institutions where necessary, (e.g., AI companies) to **boost resilience to these risks.**



Our Impact

Our core issue areas could not be more topical.

The Covid-19 crisis, coupled with the recent explosion in the capability of AI foundation models, means that we now have a window of opportunity to influence AI, biosecurity and risk

management policy that did not exist even a few years ago.

We are uniquely placed to take advantage of this opportunity, and have already made significant progress:



1

Government influence

- Policy engagement to ensure that current UK efforts on AI regulation are directed towards effectively mitigating extreme risks from AI. We are experiencing a rapid increase in demand from policymakers to advise on AI risks and the implications for governance.
- Submitted recommendations to help ensure that the planned refresh of the National Biological Security Strategy significantly improves the UK's resilience to future biological threats.
- Helped bring about clear ownership within the UK government for complex/ catastrophic risks and an extended time horizon for risks included in the UK risk register.

Policy development

- Developed compute governance policy recommendations, as part of our evidence submission to the **Future of Compute Review**
- Developed recommendations for **how AI regulation can keep pace with rapid AI progress**, **how defence can integrate AI safely**, and **how the UK can demonstrate international leadership in the safe and responsible use of AI**
- Developed a risk management tool and approach for the UK government

2



“ As a busy policymaker working in a highly stretched team in UK government, I really value the work of CLTR and knowing that I can ask a policy relevant question and either get an informed answer or a recommendation of useful contacts, in a timely manner. ”

- Civil servant working on biosecurity in the UK government

Our Impact

Mainstreaming extreme risks

- Contributed to the Institute for Government's first-ever **report** on managing extreme risks
- Jointly arranged and spoke on a panel event on 'strengthening the UK's resilience', with the Institute for Government
- Helped three House of Lords members establish a UK Resilience Forum aimed at securing the UK government's implementation of the Select Committee's recommendations

3



Boosting expert capacity to work with governments on extreme risks

- Facilitated and supported two academic placements to support work on safe and responsible AI
- Top-tier media engagement to provide a nuanced and extreme-risk focused perspective on AI and biosecurity — including a piece on **biosecurity in the Financial Times** in February

4



“ Very positive experience of working with CLTR - professional, knowledgeable and easy to deal with. They have become one of my 'go to' collaborators.

Please keep up the great work! ”

– UK Government Official

Our Finances

We have a track record of securing £2 million + in each of the last two years.

We are excited to be recruiting a Director of Strategic Partnerships as a core part of our senior team. This person will help us reach our fundraising target of £2.5 million per year, and to make our funding streams more diverse and resilient, so that we are not overly reliant on any one or two funders.

Income 2021
£2.1 million

Income 2022
£2.5 million

Our vision is a safe and flourishing world with high resilience to extreme risks, such as those from pandemics and emerging technologies.

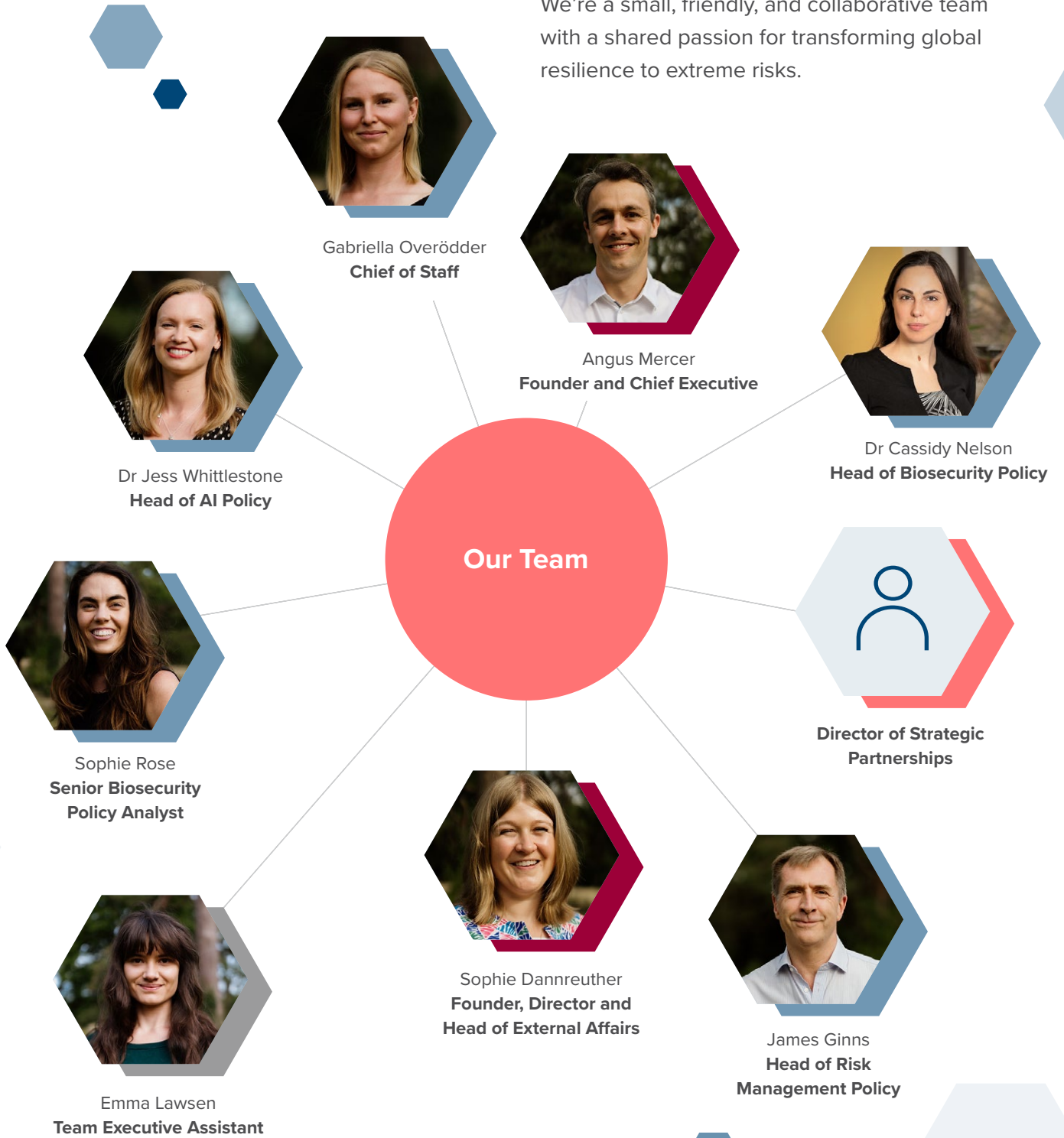


“ Like the adolescent, we are seeing rapid developments in our strength, and in our ability to get ourselves in trouble. We are almost ready for the world, ready to explore the dizzying potential the future holds. Yet when it comes to risks, we can be impulsive and careless, seizing the short-term benefits but neglecting the long-term costs. ”

Source: Project Syndicate

Our Team & Culture

We're a small, friendly, and collaborative team with a shared passion for transforming global resilience to extreme risks.



Our Team & Culture

Our Culture

At CLTR, we prioritise our people.

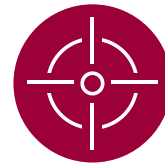
Staunch advocates of flexible working, we encourage staff to take the time they need to deliver their work and pursue their personal interests alongside it.

The emphasis is on **successful delivery**, not **time spent at the desk**.

Our Core Values



People First



Targeted,
Real-World Impact



Integrity



The Role

Director of Strategic Partnerships

Location: **Whitehall, London/Hybrid***

Reports to: **Chief Executive**

Contract: **Permanent**

Hours: **40 per week**

Salary: **Circa. £75k**

** ideally we are looking for someone who can travel to the office twice per week, but please do get in touch if location is a barrier to you applying, as we can consider remote working for the right candidate.*

This brand-new role is a fantastic opportunity for an entrepreneurial and strategic-minded fundraiser to make their mark at the heart of Whitehall, and drive impact on an international scale.

You'll play a key strategic role within the organisation: taking the lead on establishing and developing a new, sustainable income mix, with a focus on major global foundations. You'll identify, engage, and solicit unique high net worth individuals (UHNWI) and foundation donors to secure six and seven figure gifts, and create project budgets for funding bids, with the support of the Head of Operations and the wider team.

Although you'll initially be flying solo, you won't be working in a vacuum. In addition to our AI, biosecurity, and risk management units, you'll be able to draw on our directors, Head of Operations, and the board as needed.

- ✓ Are you a self-motivated, top-level fundraiser with significant experience in the major philanthropic space?
- ✓ Are you comfortable negotiating complex, strategic funding agreements?
- ✓ Are you equipped to establish and lead us through a transformative income-generation change process?
- ✓ Are you an outstanding written and in-person communicator?

If you tick all of these boxes, we want to hear from you!

Benefits

- 28 days annual leave, plus public holidays
- £3,000 annual learning and development budget
- £5,000 yearly bonus (before tax) for mental health and wellbeing, for you to spend at your discretion
- A pension contribution scheme (up to 7% employer-matched contribution)
- Health insurance through AXA
- Generous parental leave

The Role

What We're Looking For

We're keen to attract as diverse a range of candidates as possible, and we've narrowed the person specification down to the following key qualities/skills:

- Deep interest in our mission and the wider policy landscape
- Proven experience of driving significant fundraising growth (from global foundations and UHNWIs)
- A proven ability to develop and maintain trusting, long-term relationships with UHNWIs
- Experience of implementing and maintaining robust fundraising systems and processes
- Outstanding written and verbal communication

Key Priorities

- Build and drive an effective fundraising operation focused on extremely high value partnership funding
- Build, deliver, and steward high-value funding partnerships across the major foundation and UHNWI landscape
- Deliver a fully diversified income mix and grow our annual income to £2.5 million
- Contribute to the culture of a kind, ambitious, motivated and growing team



How to Apply

We're excited to fill this role and hope you're equally excited to apply!

1

Read this application pack and our website, to get a feel for what we do and ensure you're as excited about the opportunity and our work as we are



2

Send your CV to Bamboo Fundraising and arrange a time to have a chat

✉ info@bamboofundraising.co.uk

☎ 0203 750 3111



3

Submit your application by **Monday 25th September at 10am** with the subject line **"Centre of Long-Term Resilience: Director of Strategic Partnerships"**

“ This is such an exciting time to be joining CLTR. AI and biosecurity have become incredibly topical and important policy areas in the UK, and the progress the team is making is truly incredible.

Ensuring that we have a reliable and diverse source of funding in the years ahead will be critical to ensuring we can achieve our mission of transforming global resilience to extreme risks. ”

Angus Mercer, Chief Executive of CLTR